

NO.	REV.	DESCRIPTION	DATE	BY
1		ISSUED FOR QUOTE		
2		ISSUED FOR QUOTE		
3		ISSUED FOR QUOTE		
4		ISSUED FOR QUOTE		
5		ISSUED FOR QUOTE		
6		ISSUED FOR QUOTE		
7		ISSUED FOR QUOTE		
8		ISSUED FOR QUOTE		
9		ISSUED FOR QUOTE		
10		ISSUED FOR QUOTE		
11		ISSUED FOR QUOTE		
12		ISSUED FOR QUOTE		
13		ISSUED FOR QUOTE		
14		ISSUED FOR QUOTE		
15		ISSUED FOR QUOTE		
16		ISSUED FOR QUOTE		
17		ISSUED FOR QUOTE		
18		ISSUED FOR QUOTE		
19		ISSUED FOR QUOTE		
20		ISSUED FOR QUOTE		

FOR INFO: SEE DRAWING V-3366
 PHOTOCOPYING
 WEIGHT OF MOTOR: 1300 LBS.
 WEIGHT OF FRAME: 1430 LBS.
 TOTAL WEIGHT: 2730 LBS.
 ENGINE DATA:
 MANUFACTURER: WIPACSA MODEL: P-3366-3074
 McLeese Pumping SA

NOTE: FOR ADDITIONAL ENGINE
 DETAILS, SEE ATLAS-POLAR
 DRAWING V-3366

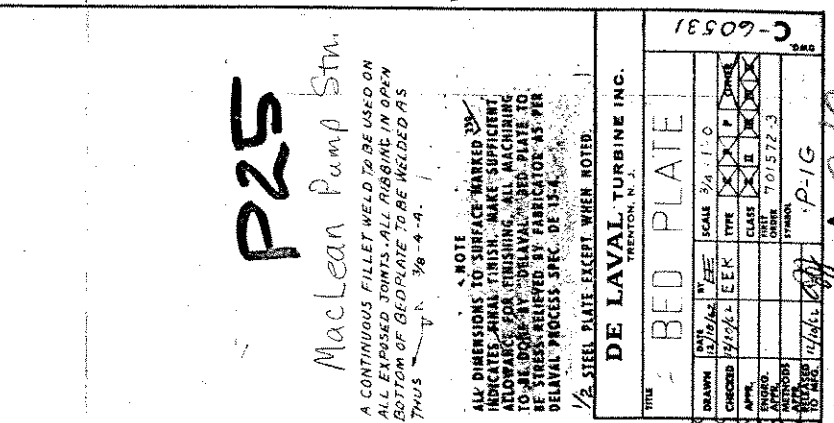
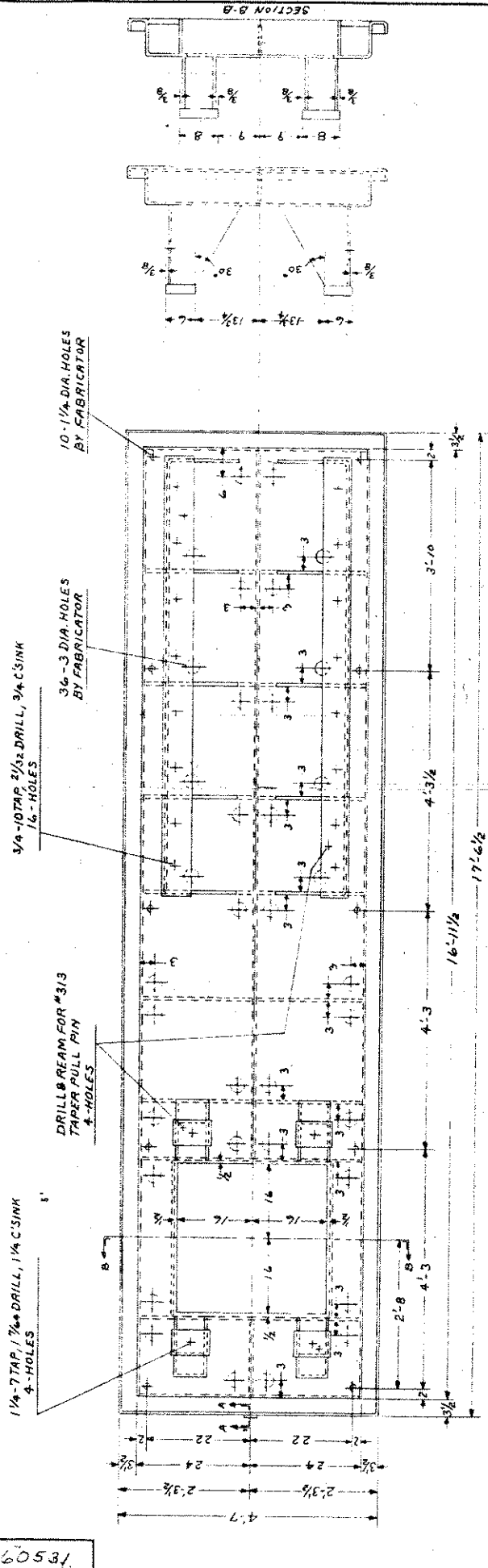
Subject to conditions
 in enclosed contract
APPROVED
 SUBJECT TO CONTRACTORY
 REQUIREMENTS IN EFFECT
 JAMES F. McLEESE LIMITED
 APR 21, 1953
 ENGINEER
 DE LAVAL TURBINE CO.

P-2

1/2

NO.	REV.	DESCRIPTION	DATE	BY
1		ISSUED FOR QUOTE		
2		ISSUED FOR QUOTE		
3		ISSUED FOR QUOTE		
4		ISSUED FOR QUOTE		
5		ISSUED FOR QUOTE		
6		ISSUED FOR QUOTE		
7		ISSUED FOR QUOTE		
8		ISSUED FOR QUOTE		
9		ISSUED FOR QUOTE		
10		ISSUED FOR QUOTE		
11		ISSUED FOR QUOTE		
12		ISSUED FOR QUOTE		
13		ISSUED FOR QUOTE		
14		ISSUED FOR QUOTE		
15		ISSUED FOR QUOTE		
16		ISSUED FOR QUOTE		
17		ISSUED FOR QUOTE		
18		ISSUED FOR QUOTE		
19		ISSUED FOR QUOTE		
20		ISSUED FOR QUOTE		

MATERIAL	PROC. SPEC.	WT.	HT.	PT. No.
37L-6M	DEF-4			

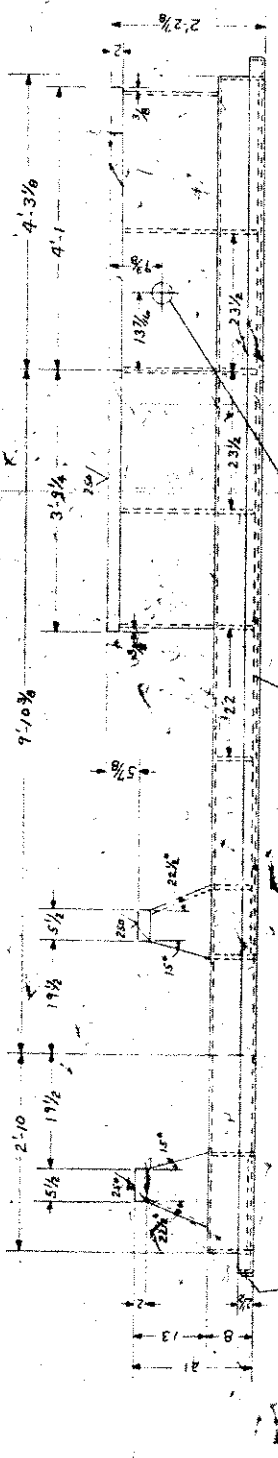


P25
MacLean Pump Stn.

NOTE
ALL DIMENSIONS TO SURFACE MARKED BY INDICATES FINAL FINISH. MAKE SUFFICIENT ALLOWANCE FOR FINISHING. ALL MACHINING TO BE DONE BY DELAVAL. BED PLATE TO BE STRESS RELIEVED BY FABRICATOR AS PER DELAVAL PROCESS SPEC. OF 13-4.

DE LAVAL TURBINE INC. TRENTON, N. J.	
TITLE: BED PLATE	
SCALE: 3/4" = 1'-0"	DATE: 11/16/61
DESIGNED BY: E.E.K.	CHECKED BY: E.E.K.
APPROVED BY: [Signature]	DATE: 11/16/61
CLASS: 701572-3	STATION: P-1G
ORDER: 701572-3	REV: 2/2

P-1G
C-60531



APPROVED
JAMES F. MACLAREN LIMITED

OPEN BOTTOM RIBS 1/2" ABOVE BASE

2-3/4" DIA. HOLES ONE EACH SIDE BY FABRICATOR

1-HEAVY STEEL PIPE HALF COUPLING

SECTION A-A

DESIGNED BY: E.E.K.	CHECKED BY: E.E.K.	DATE: 11/16/61
APPROVED BY: [Signature]	DATE: 11/16/61	STATION: P-1G
CLASS: 701572-3	ORDER: 701572-3	REV: 2/2